



Main characteristics

Measuring range	-1 ... 0 bar up to 0 ... 200 bar
Long term stability	≤ 0.3% FS / Year
Accuracy (20 °C) <small>(linearity, hysteresis and repeatability according Best Fit Straight Line)</small>	≤ ± 0.5% FS (BFSL)

Technical specifications

Measuring principle	Thick film on ceramic
Measuring ranges	-1 ... 0 bar up to 0 ... 200 bar
Type of pressure	Relative
Accuracy (20 °C) <small>(linearity, hysteresis and repeatability according Best Fit Straight Line)</small>	≤ ± 0.5% FS (BFSL)
Error of zero point	≤ ± 1% FS
Error of span	≤ ± 1% FS
Zero thermal drift	≤ ± 0.25% FS/10 K
Span thermal drift	≤ ± 0.15% FS/10 K
Long term stability	≤ 0.3% FS / Year
Response time (10 ... 90%)	≤ 3 ms
Process connections	See page 3

Environment

Temperature	
Storage	-40 ... + 85°C
Compensated range	-10 ... + 55°C
Medium	
NBR	-40 ... + 100°C
EPDM	-40 ... + 100°C
FKM (Viton®)	-25 ... + 100°C
Ambient	
NBR	-40 ... + 85°C
EPDM	-40 ... + 85°C
FKM (Viton®)	-20 ... + 85°C

Main features

- OEM applications
- Excellent price/performance ratio
- Stainless Steel or brass construction
- Compact design

Applications

- Pneumatic
- HVAC
- Factory automation
- Energy
- Agriculture vehicles

Protection rating	IP65 (EN 60529) up to IP67 depending on electrical connection
Vibration IEC60068-2-6	1.5 mm p-p (10 – 55 Hz), 10 g (55 Hz – 2 KHz) 10 cycles within 2.5 h per axis
Shock IEC60068-2-27	50 g/11 ms 100 g/6 ms 3 x Imp. per axis and direction
Bump IEC60068-2-27	100 g/2 ms 4000 x Imp. per Axis and direction
Random IEC60068-2-64	0.1 g ² /Hz (10g RHS)

Electrical specification

Output signal / Power supply	4 ... 20 mA / 11 ... 30 VDC 0 ... 10 V / 15 ... 30 VDC 1 ... 5 V / 11 ... 30 VDC 0.5 ... 4.5 V / 5 VDC ratiometric
Load impedance	Current output $R_D = (U_{supply} - 11 V) / 20 mA$ Voltage output > 5 KΩ
Insulation resistance	>100 MΩ at 250 VDC
Electrical connections	See page 3

Material

Process connection	Brass (CTL) or SS 1.4404 AISI 316L (CTX)
Housing	Brass (CTL) or SS 1.4301 AISI 304 (CTX)
Diaphragm	Ceramic (96% Al ₂ O ₃)
Sealing	NBR, CR, EPDM, FKM (Viton®)

Approvals

CE conformity	Directive 2004/108/CE in accordance with EN 61000-6-2, EN 61000-6-3, EN 61326-1 (Tab.2) Pressure directive 97/23/CE
---------------	---

Measuring ranges and overpressure safety

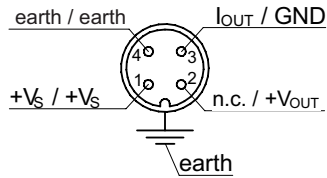
Pressure in bar							
Pressure range	-1 ... 0 0 ... 1	-1 ... 1.5 0 ... 2.5	-1 ... 3 0 ... 4	-1 ... 5 0 ... 6	-1 ... 9 0 ... 10	-1 ... 15 0 ... 16	-1 ... 24 0 ... 25
Over pressure	2	4	8	12	20	32	50
Burst pressure	3	7	12	18	30	48	75

Pressure in bar					
Pressure range	-1 ... 39 0 ... 40	0 ... 60	0 ... 100	0 ... 160	0 ... 200
Over pressure	80	120	200	320	360
Burst pressure	120	180	300	480	480

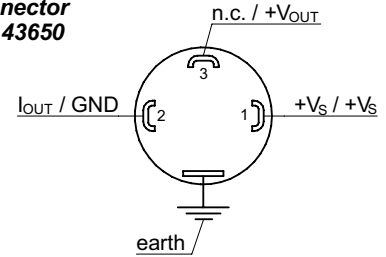
Electrical connections

Signal at 4...20 mA / Signal at 0...10V

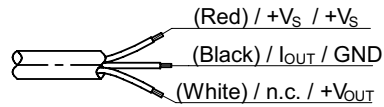
M12 4-pins



Connector DIN 43650

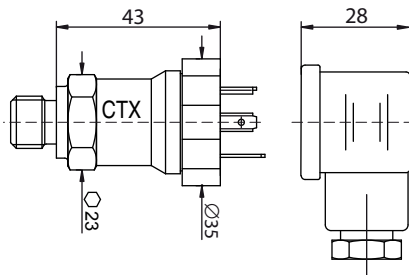


Cable output

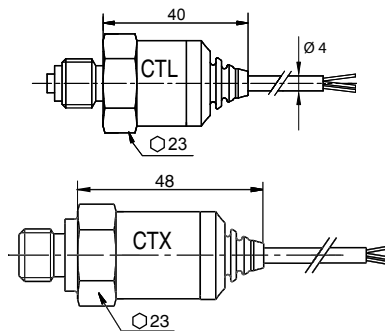


Dimensions (mm)

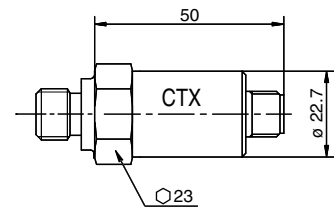
DIN 43650 connector IP65



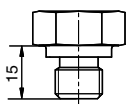
Cable outlet IP65



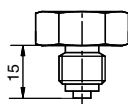
M12 4 pins, IP65



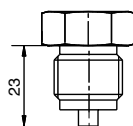
Hydraulic connections



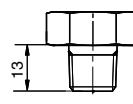
G 1/4 DIN 3852-E



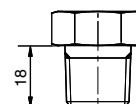
G 1/4 EN837



G 1/2 EN837



1/4 NPT



1/2 NPT

Ordering details CTX-CTL

	CT	x	.	x	.	x	.	x	.	xxx	.	x
Model												
Pressure transmitter	CT											
Model type												
Brass version		L										
Stainless steel version		X										
Output signal												
4 ... 20 mA												3
0 ... 10 V												2
1 ... 5 V												4
0.5 ... 4.5 V (ratiometric)												7
Process connection												
G $\frac{1}{4}$ DIN 3852												B
G $\frac{1}{4}$ EN 837												2
G $\frac{1}{2}$ EN 837												3
$\frac{1}{4}$ NPT												5
$\frac{1}{2}$ NPT												6
Sealing												
NBR												3
CR												4
EPDM												5
FKM (Viton®)												9
Pressure range and unit in bar												
0...-1												B59
-1...0.6												B72
-1...1.5												B74
-1...3												B76
-1...5												B77
-1...9												B79
-1...15												B81
-1...24												B82
-1...39												B1L
0...1												B15
0...2.5												B18
0...4												B19
0...6												B20
0...10												B22
0...16												B24
0...25												B26
0...40												B27
0...60												B29
0...100												B31
0...160												B33
0...200												B34
Output connection												
M12, 4 pins												A
DIN 43650, 4 pins												0
Cable (1 m)												1
Cable (2 m)												2
Cable (5 m)												5