



GOST

### Special Features

- Stainless steel case & measuring system
- Rugged construction
- Dry or liquid filled
- Standard followed in general EN 837-1

### Application

- Food & beverage
- Engine compressors
- Diesel engines
- Equipments
- Nuclear power plants
- Pharmaceutical
- Turbines
- Hydraulic
- Petrochemical industries
- Hydro-cleaning machines
- Refrigerating plants and gaseous / liquid media that will not obstruct the pressure system.
- Pumps
- Chemical
- Conventional
- Presses

### Specifications

#### Standard Version : 50 mm, 63 mm & 80 mm

Accuracy	:	± 1.6% of F. S.(For NS 63 mm & NS 80 mm) & ±2.5% of F. S.(For NS 50 mm)
Ambient temperature	:	- 25°C to + 65°C
Process temperature	:	Max 180°C
Operating pressure	:	75 % of Scale Value
Over pressure limit	:	≤ 100 bar : 125% of Max. Scale Value
	:	> 100 to ≤ 600 bar : 115% of Max. Scale Value
	:	> 600 to ≤ 1600 bar : 110% of Max. Scale Value

Case & Bezel	:	AISI 304 SS (Bayonet type)
Socket	:	AISI 316 SS
Bourdon	:	AISI 316L SS
Movement	:	AISI 304 SS
Joints	:	Tig Argon Arc Welding

Protection	:	IP 65
Dial	:	Aluminium, black graduation on white background
Pointer	:	Black Coloured, Fixed
Window	:	Plexi Glass
Filling Plug	:	Nitrile
Gasket	:	Neoprene / Silicon rubber

#### Dry but fillable version (option FG)

Fillable Dampening Liquid	:	Glycerine 99.7%
Ambient Temperature	:	(-) to 65°C
Process Temperature	:	Maximum 65°C
Other Features	:	Refer Specification of Standard Version

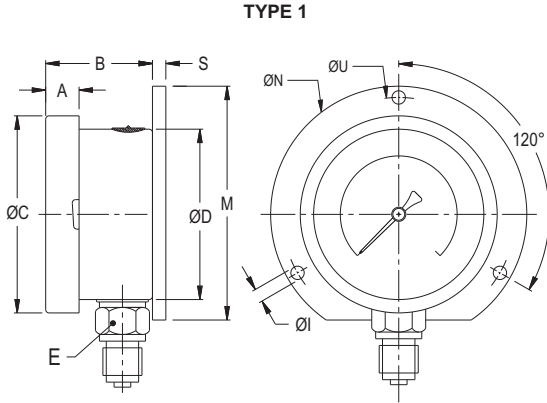
#### Glycerine filled version (option PY)

Accuracy	:	±1.6% of F. S.(For NS 63 mm & NS 80 mm) & ±2.5% of F. S.(For 50 mm)
Ambient Temperature	:	Maximum
Process Temperature	:	Maximum 65°C
Window	:	Plexi Glass
Dampening Liquids	:	Glycerine 99.7%
Other Features	:	Refer Specification of Standard Version

#### Temperature effect:

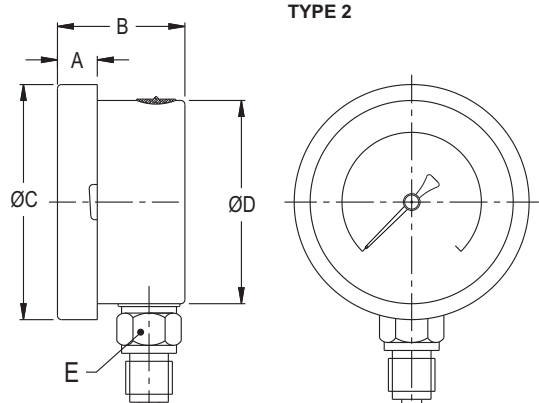
The variation of indication caused by effects of temperature is to be calculated by below formula; which is to be added in the specified accuracy while measurement :- Formula :  $\pm 0.04 \times (t_2 - t_1) \% \text{ of F. S.}$  where  $t_1$  = reference temperature (+20°C) and  $t_2$  = ambient temperature in °C.

Dimensions - standard version



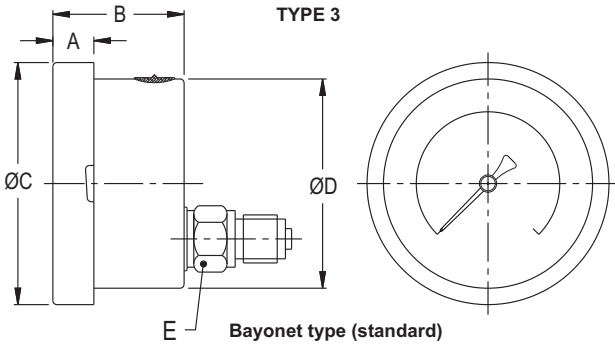
TYPE 1  
Bayonet type (standard)

NS	A	B	ØC	ØD	E	S	ØN	ØI	ØU	M	Weight in gram (With Box)	Weight in gram (With Glycerin & Box)
63	10	32	69.5	62.5	A/F 14	7	86	3.6	75	80	215.0	265.0
80	11	35	89.5	80	A/F 14	4	110	5	94	95	300.0	380.0



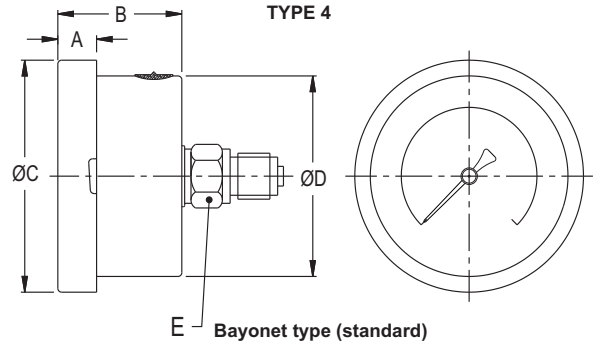
TYPE 2  
Bayonet type (standard)

NS	A	B	ØC	ØD	E	Weight in gram (With Box)	Weight in gram (With Glycerin & Box)
50	10	32.5	58.5	51	A/F 14	153.0	210.0
63	10	32	69.5	62.5	A/F 14	180.0	240.0
80	11	35	89.5	80	A/F 14	250.0	330.0



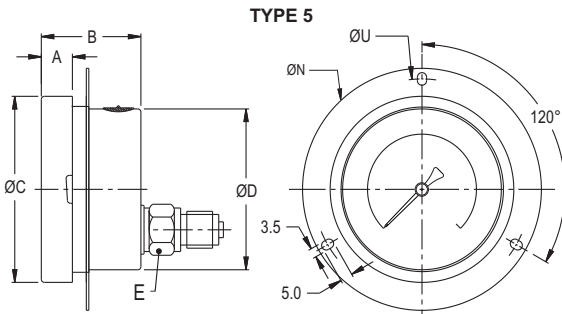
TYPE 3  
Bayonet type (standard)

NS	A	B	ØC	ØD	E	Weight in gram (With Box)	Weight in gram (With Glycerin & Box)
63	10	32	69.5	62.5	A/F 14	190.0	250.0



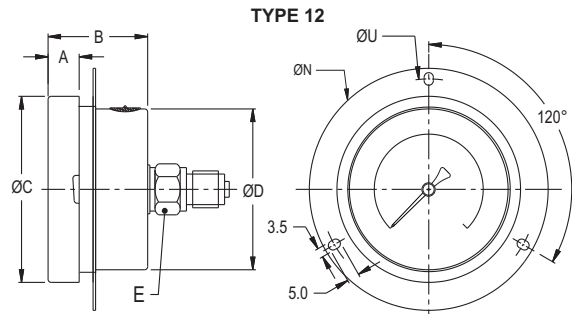
TYPE 4  
Bayonet type (standard)

NS	A	B	ØC	ØD	E	Weight in gram (With Box)	Weight in gram (With Glycerin & Box)
50	10	32.5	58.5	51	A/F 14	170.0	230.0
63	10	32	69.5	62.5	A/F 14	188.0	250.0
80	11	35	89.5	80	A/F 14	240.0	320.0



TYPE 5  
Bayonet type (standard)

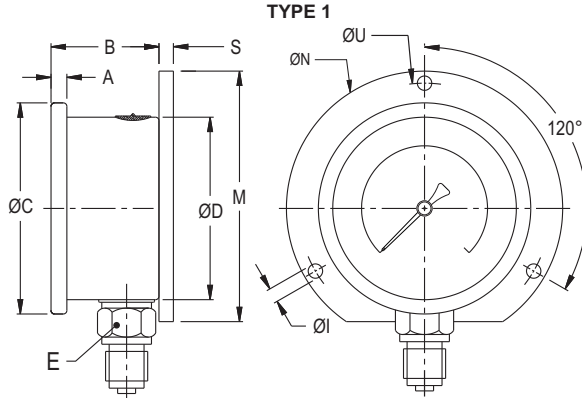
NS	A	B	ØC	ØD	E	ØN	ØU	Weight in gram (With Box)	Weight in gram (With Glycerin & Box)
63	10	32	69.5	62.5	A/F 14	86	75	213.0	275.0



TYPE 12  
Bayonet type (standard)

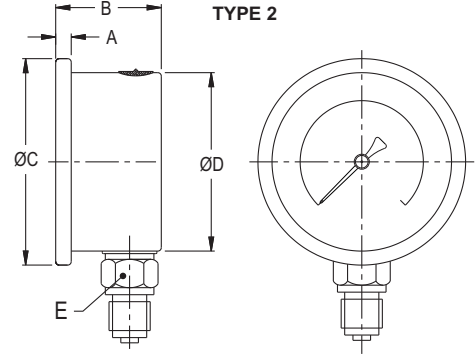
NS	A	B	ØC	ØD	E	ØN	ØU	Weight in gram (With Box)	Weight in gram (With Glycerin & Box)
63	10	32	69.5	62.5	A/F 14	86	75	213.0	275.0

**Dimensions - standard version**



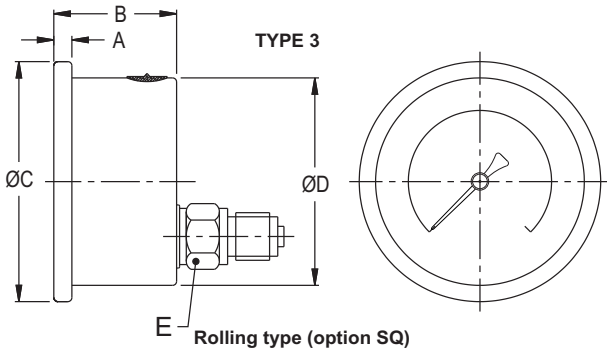
Rolling type (option SQ)

NS	A	B	ØC	ØD	E	S	ØN	ØI	ØU	M	Weight in gram (With Box)	Weight in gram (With Glycerin & Box)
63	6.5	30.5	69	62.5	A/F 14	7	86	3.6	75	80	190.0	250.0



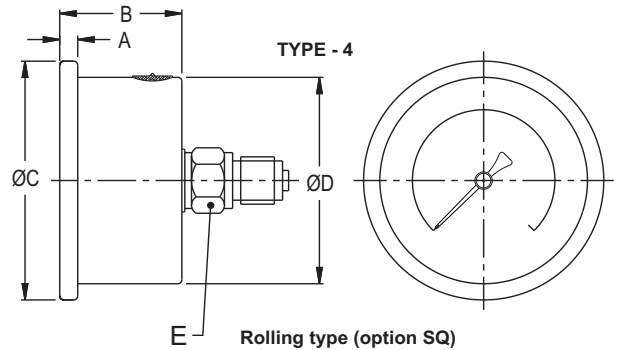
Rolling Type (option SQ)

NS	A	B	ØC	ØD	E	Weight in gram (With Box)	Weight in gram (With Glycerin & Box)
50	5	29	57.5	51.5	A/F 14	125.0	185.0
63	6.5	30.5	69	62.5	A/F 14	140.0	200.0



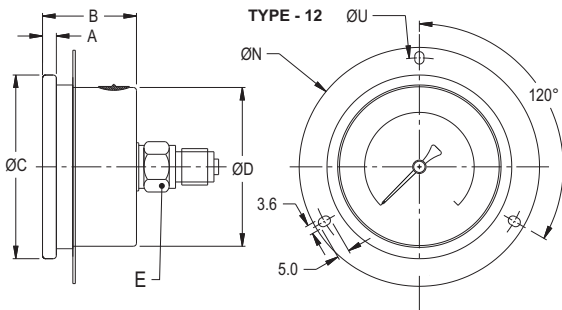
Rolling type (option SQ)

NS	A	B	ØC	ØD	E	Weight in gram (With Box)	Weight in gram (With Glycerin & Box)
63	6.5	30.5	69	62.5	A/F 14	160.0	220.0



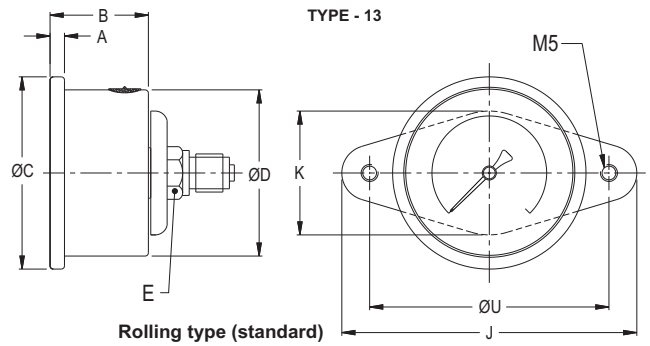
Rolling type (option SQ)

NS	A	B	ØC	ØD	E	Weight in gram (With Box)	Weight in gram (With Glycerin & Box)
50	4.5	29	57.5	51.5	A/F 14	117.0	167.0
63	6.5	30.5	69	62.5	A/F 14	170.0	230.0



Rolling type (option SQ)

NS	A	B	ØC	ØD	E	ØN	ØU	Weight in gram (With Box)	Weight in gram (With Glycerin & Box)
63	6.5	30.5	69	62.5	A/F 14	86	75	220.0	280.0



Rolling type (standard)

NS	A	B	ØC	ØD	E	J	K	ØU	Weight in gram (With Box)	Weight in gram (With Glycerin & Box)
50	5	29	57	51.5	A/F 14	91	38	70.5	180.0	240.0
63	6.5	30.5	69	62.5	A/F 14	91	38	70.5	210.0	270.0

Notes : • Drawings are not to scale. • All Dimensions are in mm . • NS = Nominal size  
• Weights mentioned are approximate and for standard product. Weight can be different after selection of options.

## Range Table

Note : We offer Pressure ranges, Vacuum ranges and Compound ranges in Scales like kPa, MPa, bar, psi, kg/cm<sup>2</sup> & Dual Scale like kPa with psi, kPa with bar, bar with psi or scales as per the requirement can be provided on request. Following are the example tables for kg/cm<sup>2</sup> & psi scales.

### Range with nominal sizes

Nominal size

Range (psi with kg/cm <sup>2</sup> )		50 mm	63 mm	80 mm
psi	kg/cm <sup>2</sup>			
-30 inHg / 0	-760 mmHg / 0	✓	✓	✓
0/15 psi	0/1 kg/cm <sup>2</sup>	✓	✓	✓
0/30 psi	0/2 kg/cm <sup>2</sup>	✓	✓	✓
0/60 psi	0/4 kg/cm <sup>2</sup>	✓	✓	✓
0/100 psi	0/7 kg/cm <sup>2</sup>	✓	✓	✓
0/150 psi	0/10 kg/cm <sup>2</sup>	✓	✓	✓
0/220 psi	0/16 kg/cm <sup>2</sup>	✓	✓	✓
0/300 psi	0/20 kg/cm <sup>2</sup>	✓	✓	✓
0/400 psi	0/28 kg/cm <sup>2</sup>	✓	✓	✓
0/500 psi	0/35 kg/cm <sup>2</sup>	✓	✓	✓
0/600 psi	0/42 kg/cm <sup>2</sup>	✓	✓	✓
0/1000 psi	0/70 kg/cm <sup>2</sup>	✓	✓	✓
0/1500 psi	0/100 kg/cm <sup>2</sup>	✓	✓	✓
0/2200 psi	0/160 kg/cm <sup>2</sup>	✓	✓	✓
0/3000 psi	0/200 kg/cm <sup>2</sup>	✓	✓	✓
0/4000 psi	0/280 kg/cm <sup>2</sup>	✓	✓	✓
0/5000 psi	0/350 kg/cm <sup>2</sup>	✓	✓	✓
0/6000 psi	0/400 kg/cm <sup>2</sup>	✓	✓	✓
0/10000 psi	0/700 kg/cm <sup>2</sup>	×	✓	✓
0/15000 psi	0/1000 kg/cm <sup>2</sup>	×	✓	✓
- 30inHg /30	- 1/2 kg/cm <sup>2</sup>	×	✓	✓
- 30inHg /60	- 1/4 kg/cm <sup>2</sup>	×	✓	✓
- 30inHg /100	- 1/7 kg/cm <sup>2</sup>	×	✓	✓
- 30inHg /150	- 1/10 kg/cm <sup>2</sup>	×	✓	✓
- 30inHg /200	- 1/14 kg/cm <sup>2</sup>	×	✓	✓
- 30inHg /300	- 1/21 kg/cm <sup>2</sup>	×	✓	✓

### Ammonia with temperature scale

- 30" Hg / 150 psi		×	✓	✓
- 30" Hg / 300 psi		×	✓	✓
0/300 psi		×	✓	✓
-1/12.5 kg/cm <sup>2</sup>		×	✓	✓
-1/16 kg/cm <sup>2</sup>		×	✓	✓
-1/25 kg/cm <sup>2</sup>		×	✓	✓

### Accessories (refer datasheet for complete specifications)

<b>EC</b>	Gauge cock	<b>EG</b>	Snubber
<b>ED</b>	Overload protector (gauge saver)**	<b>EH</b>	Siphon
*	Needle valve	<b>EB</b>	Cooling tower

\* Refer catalogue for Valves & Manifolds

\*\* For Pressure Ranges.

How To Order	Example
--------------	---------

**Basic Model**

<b>Code</b>					AD
<b>Nominal Size</b>	<b>C</b>	<b>D</b>	<b>E</b>		X
	50 mm	63 mm	80 mm		

**Type of Mounting**

<b>1</b>	Wall/ surface/ projection mounting With bottom entry	X	✓	✓	
<b>2</b>	Direct bottom entry	✓	✓	✓	X OR XX
<b>3</b>	Direct lower back entry	X	✓	X	
<b>4</b>	Direct center back entry	✓	✓	✓	
<b>5</b>	Lower back entry with front flange	X	✓	X	
<b>12</b>	Center back entry with front flange	X	✓	X	
<b>13</b>	Center back entry with mounting bracket *	✓	✓	X	

Note : \*Applicable for Rolling type design only.

<b>Gauge Connection</b>					
<b>1B M</b>	1/8" BSP(M)	✓	✓	X	XXX
<b>1N M</b>	1/8" NPT(M)	✓	✓	X	
<b>1TM</b>	1/8" BSPT(M)	✓	✓	X	
<b>2B M</b>	1/4" BSP(M)	✓	✓	X	
<b>2N M</b>	1/4" NPT(M)	✓	✓	X	
<b>2TM</b>	1/4" BSPT(M)	✓	✓	X	
<b>3B M</b>	3/8" BSP(M)	X*	X	✓	
<b>3NM</b>	3/8" NPT(M)	X*	X*	✓	
<b>3TM</b>	3/8" BSPT(M)	X*	X*	✓	
<b>4B M</b>	1/2" BSP(M)	X*	X*	X*	
<b>4NM</b>	1/2" NPT(M)	X*	X*	X*	
<b>4TM</b>	1/2" BSPT(M)	X	X	X	

\* These connections will be provided on request. Consult factory for minimum order quantity, price & delivery.  
 Note : Connections like Metric/ PT/ PF/ Flaired/ UNF/ G/ R etc. can be provided on request.

**Range**

Refer range table	0/10 kg/cm <sup>2</sup>
-------------------	----------------------------

**Optional Extras**

<b>RH</b> Custom designed dial		<b>SX</b> SS tag plate	
<b>SG</b> Oxygen service (for dry version)		<b>TB</b> Helium leak test	
<b>PS</b> AISI 316 SS case & bezel		<b>QB</b> Integral dampening screw (AISI 316 SS)	
<b>SQ</b> Case with rolling type bezel**		<b>SJ</b> Maximum reading pointer with plexi glass (for dry version)*	
<b>PW</b> Five point calibration certificate		<b>RX</b> Shatterproof / safety glass (for bayonet type design)	XX
<b>FG</b> Fillable liquid glycerine		<b>RZ</b> Toughened glass (for bayonet type design)	
<b>FS</b> Fillable liquid silicon oil		<b>RR</b> Enclosure protection IP 66	
<b>PY</b> Dampening liquid glycerine filled		<b>RE</b> Enclosure protection IP 67	
<b>QA</b> Dampening liquid silicon oil filled		<b>PU</b> Calibration certificate traceable to National/ International standards	
<b>RI</b> 25 mm BOD (except mounting 4, 12 & 13)*		<b>SF</b> Movement with dampening jelly	
<b>GH</b> Material test certificates****		<b>ZD</b> Ammonia range (with temperature scale)*#	
<b>SZ</b> Welded socket to the case			

\* Applicable for NS 63 mm.

# Applicable for NS 80 mm.

\*\* Applicable for NS 50 mm & 63 mm.

\*\*\*\*Material test certificates will be provided for wetted parts only with chemical composition testing.  
 For others, please consult factory.

**Ordering Example: AD . X . X OR XX . XXX . 0/10 kg/cm<sup>2</sup> . XX**

For other optional items, please contact factory for delivery and minimum quantity of order.

Note : Specifications and dimensions given in this product catalogue represents the state of engineering at the time of printing .

Modifications may take place and materials specified may be replaced by others without prior notice.